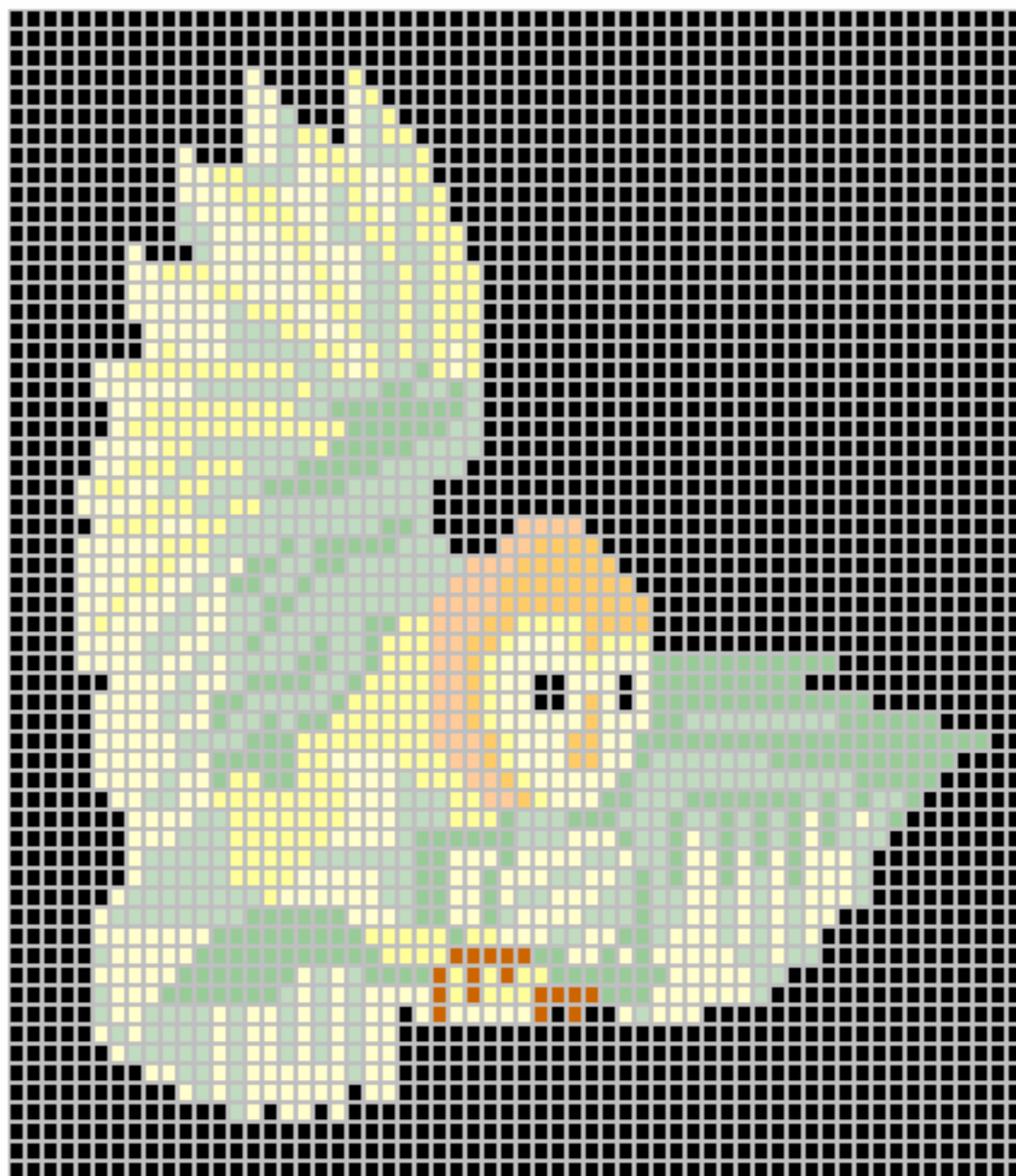


Owl In Flight original version

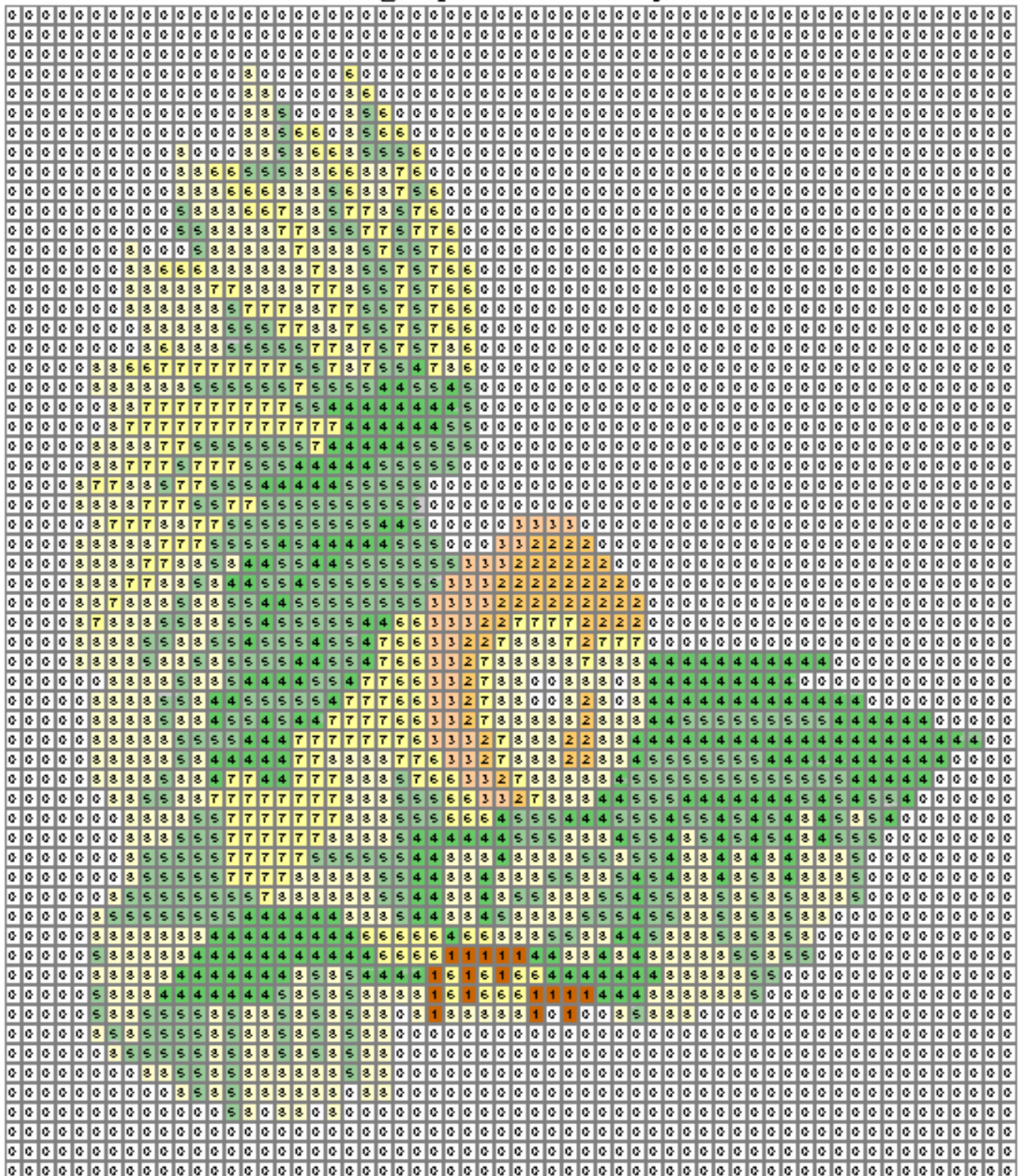


The original version has always left color choices up to the beadworker. See the printer friendly version on page 2 of this file for a better idea of the color choices you, the beadworker, might choose to make.

Pattern copyright 2000 by Arleen Hardin

This pattern may have been based on a image copyrighted by Andy Harmer, who, as of July 1, 2003, has graciously given me permission to continue offering this pattern to you.

Owl In Flight printer friendly version



- 0 = black
- 1 = dk brown
- 2 = lt brown
- 3 = dk beige
- 4 = pale green
- 5 = palest green
- 6 = pale yellow
- 7 = dk cream
- 8 = lt cream

Pattern copyright 2000 by Arleen Hardin
 This pattern may have been based on an image
 copyrighted by Andy Harmer, who has graciously
 given me permission to continue offering it to you.
<http://arleenhardin.com>